



PARTS & PRODUCTS

ENGINEERING SOLUTIONS TO ALL YOUR CABIN INTEGRATION REQUIREMENTS



Aerospace Engineering Solutions

EASA.21J.722, UAE DOA/181, ECAA/AW/AE/I0151/R1

UK Office: 6 Freeport Office, Century Drive, Braintree, Essex, CM77 8YG

Ireland Office: Building 4000 Suites, 4239/4240 Atlantic Avenue,
Westpark Business Campus, Shannon, Ireland

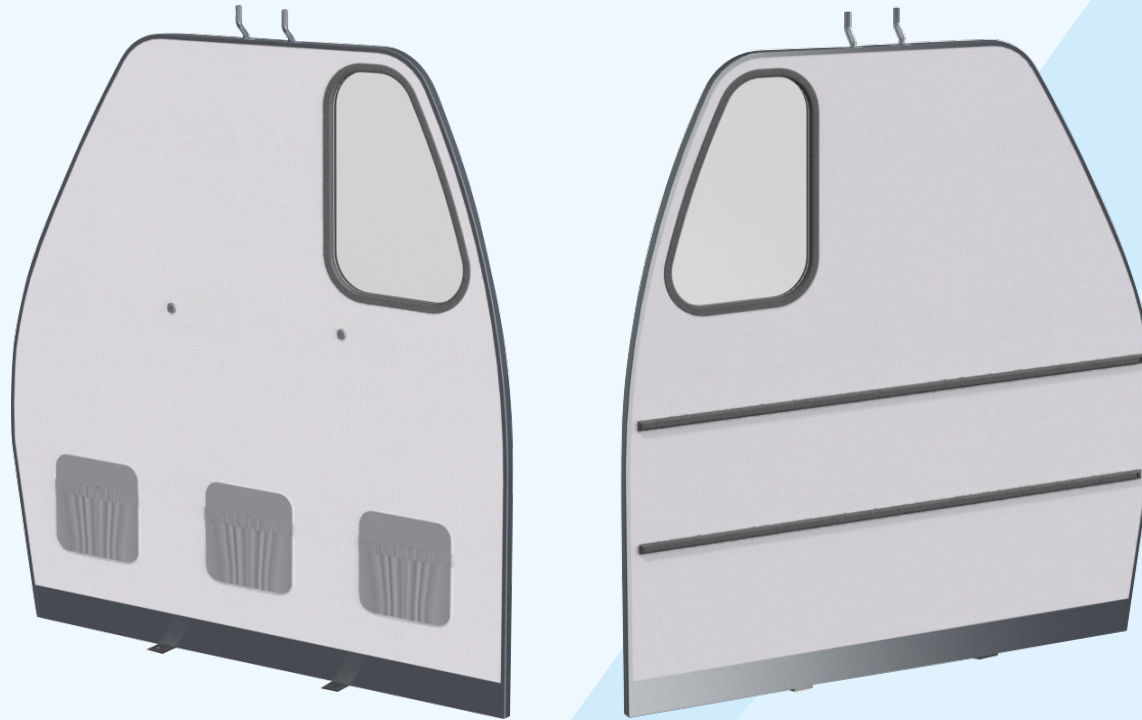
PRODUCT CATALOGUE

Aerospace Engineering Solutions (AES) is a European Aviation Safety Agency Part 21J (EASA.21J.722), General Civil Aviation Authority (DOA/181) and Egyptian Civil Aviation Authority (ECAA/AW/AE/I0151/R1) Design Organisation Approval (DOA) holder supporting aerospace clients across the globe.

With over 2,500 STC's and Minor changes completed since 2001, AES can deliver engineering solutions for your aircraft cabin integration requirements to the highest level through safety, flexibility, and excellent customer service.

This catalogue highlights a selection of parts and products from simple brackets and placards to soft furnishing, galley units, stowage units, and structural support equipment.

All parts are provided with EASA/CAA Form 1 Release for your aircraft needs.



A320 FAMILY FORWARD PARTITION

Left Hand & Right Hand

Customised to suit your requirements

- ▶ Bespoke branding
- ▶ Literature Pockets
- ▶ Bassinet Fittings
- ▶ Rub strips
- ▶ Small or large window
- ▶ Installation Hardware
- ▶ Choice of 70F1 décor
- ▶ One way vision branding
- ▶ EASA 21J Minor modification to install

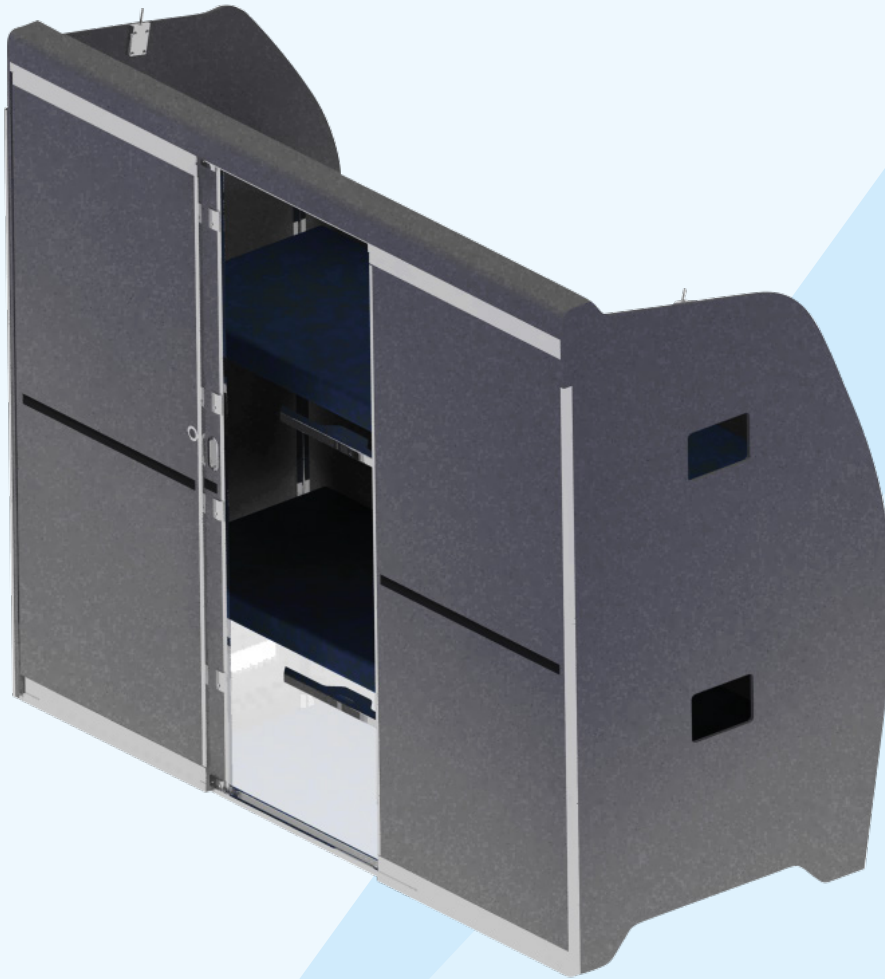


B737 FAMILY FORWARD PARTITION

Left Hand

Cost effective solution

- ▶ Literature Pockets
- ▶ Bassinet Fittings
- ▶ Rub strips
- ▶ Small or large window
- ▶ One way vision branding
- ▶ Installation Hardware
- ▶ Choice of 70F1 décor
- ▶ EASA 21J Minor modification to install



CREW REST MODULE

B767

Customised to suit your requirements

EASA STC 10044405

- ▶ Supplied with EASA Approved engineering and ICA
- ▶ Double bunk bed
- ▶ Installation kits provided
- ▶ Sliding Door for easy access
- ▶ Choice of laminate

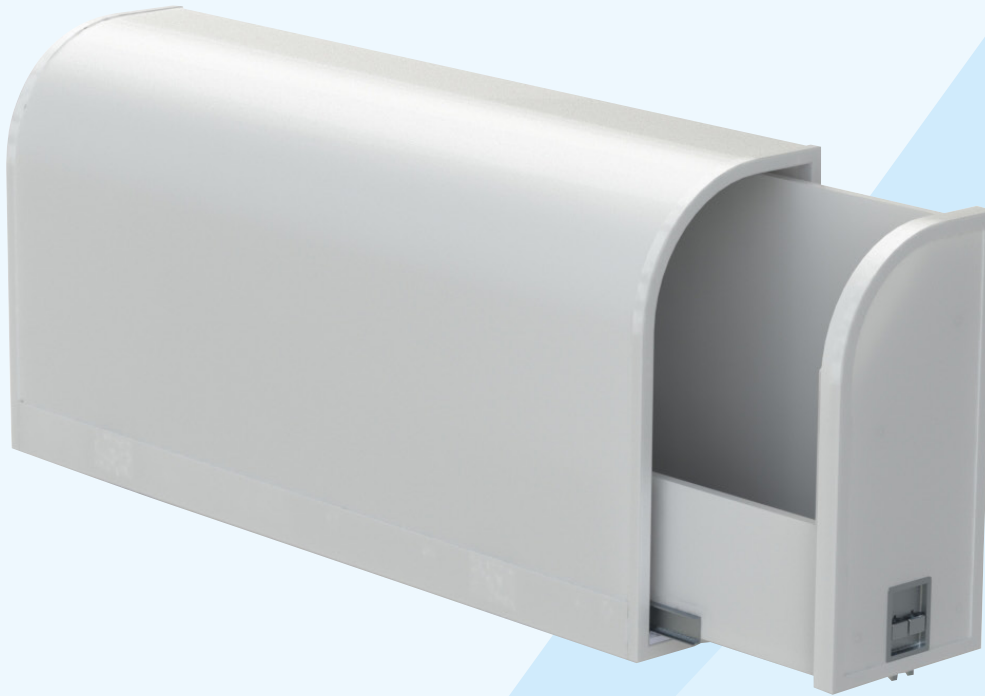


CLASS DIVIDER WITH CURTAINS

B737NG

Customised to suit your requirements

- ▶ Supplied with EASA Approved engineering and ICA
- ▶ Installation kits provided
- ▶ Choice of curtain material to suit your airline

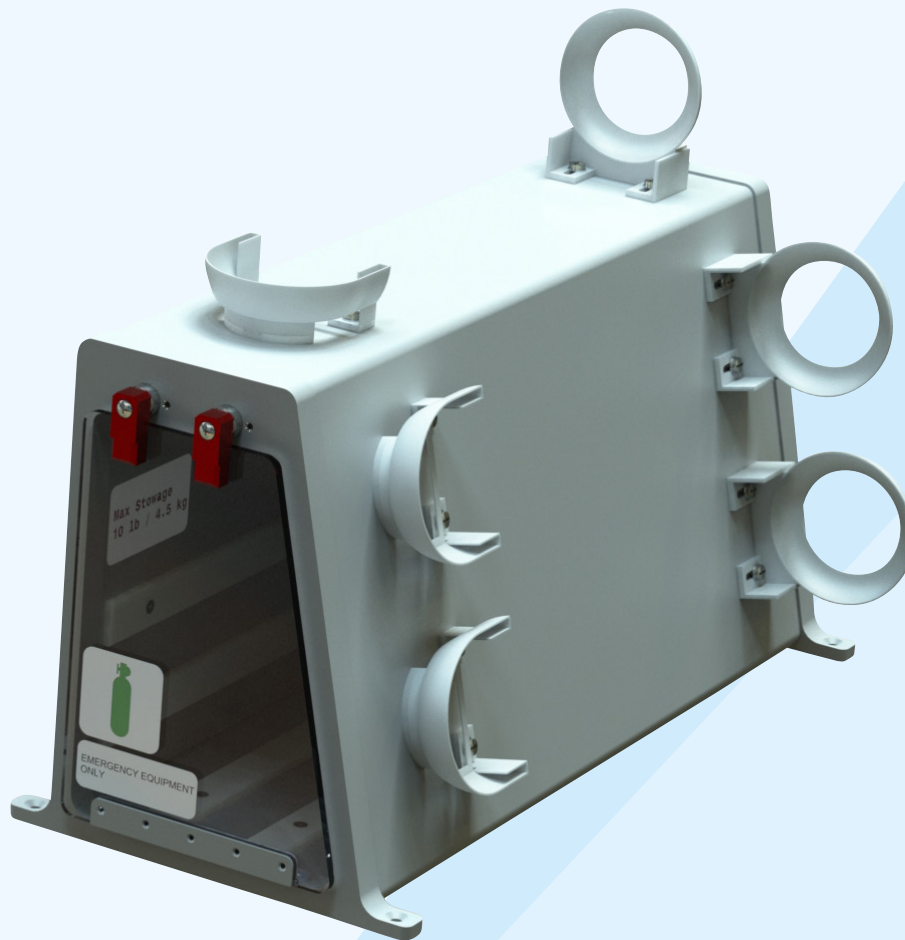


8" DOGHOUSE STOWAGE

A320 and B737NG

Cost effective solution

- ▶ Supplied with installation kits and EASA approved engineering and ICA
- ▶ Choice of paint colours or laminates
- ▶ Option to include safety equipment provisions within the stowage
- ▶ 10Kg Capacity



EMERGENCY EQUIPMENT MOUNTING SYSTEMS

Various Aircraft

Budget friendly track mounted assembly

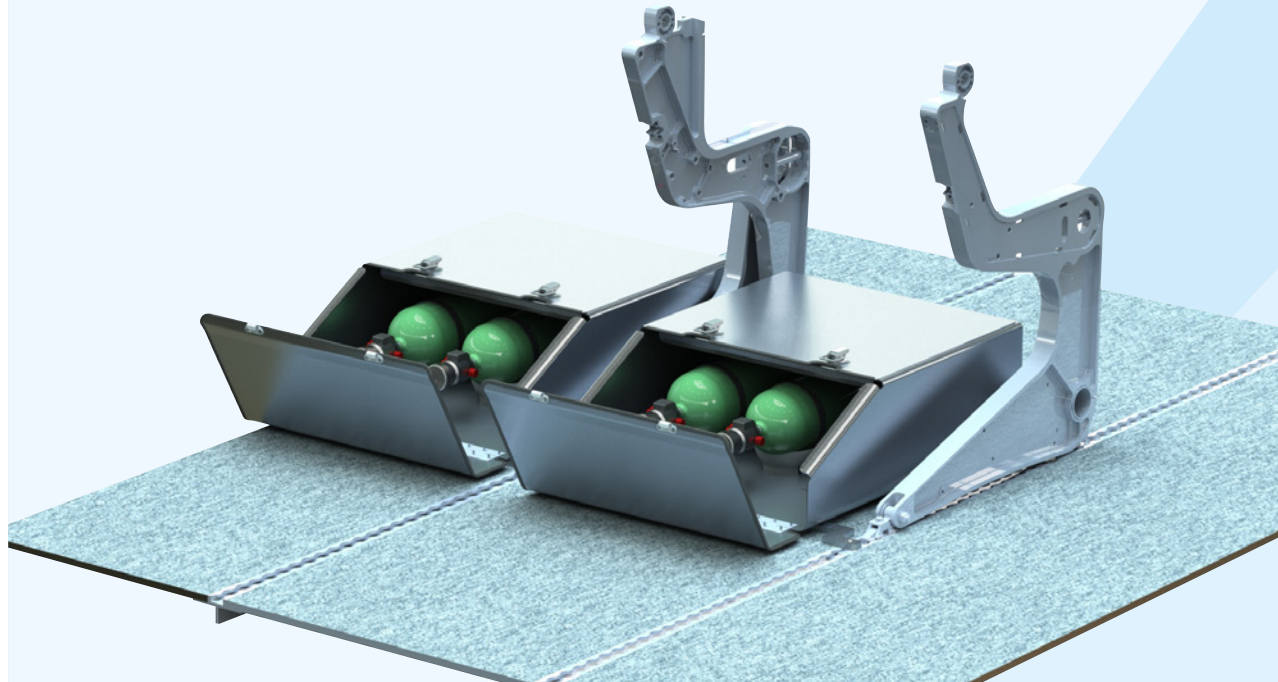
- ▶ Supplied with installation kits and EASA approved engineering
- ▶ Painted to match your interior
- ▶ Incorporate bespoke provisions to suit equipment

EMERGENCY EQUIPMENT MOUNTING SYSTEMS

A321 Family

Free up valuable space in overhead stowages

- ▶ Supplied with installation kits and EASA approved engineering
- ▶ Painted to match your interior
- ▶ Incorporate bespoke provisions to suit your equipment



WHEELCHAIR STOWAGE

B737 & A320

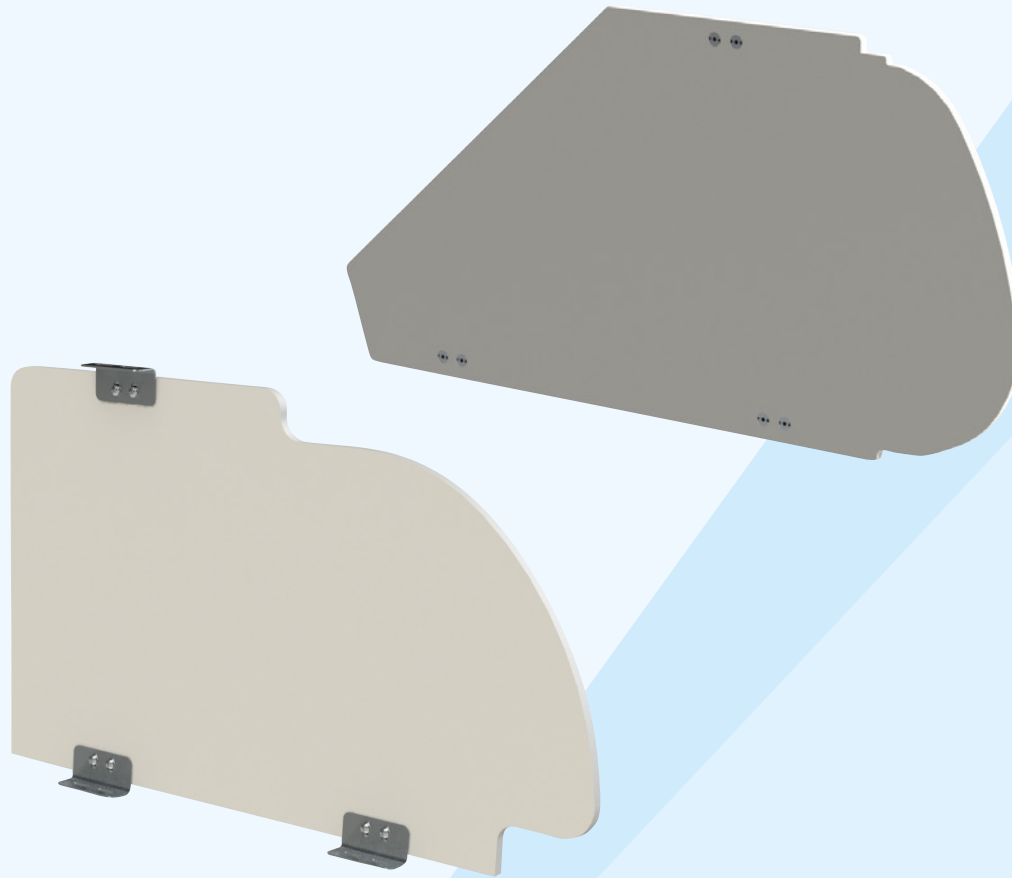
Budget friendly track mounted equipment

- ▶ Supplied with installation kits and EASA approved engineering
- ▶ Installed discretely behind rear row seat
- ▶ Can accomodate equipment up to 21.3" x 16.3"

For a competitive quote please contact:

Email: info@aesglobal.co.uk

Tel : **+44 (0) 1376 344960**

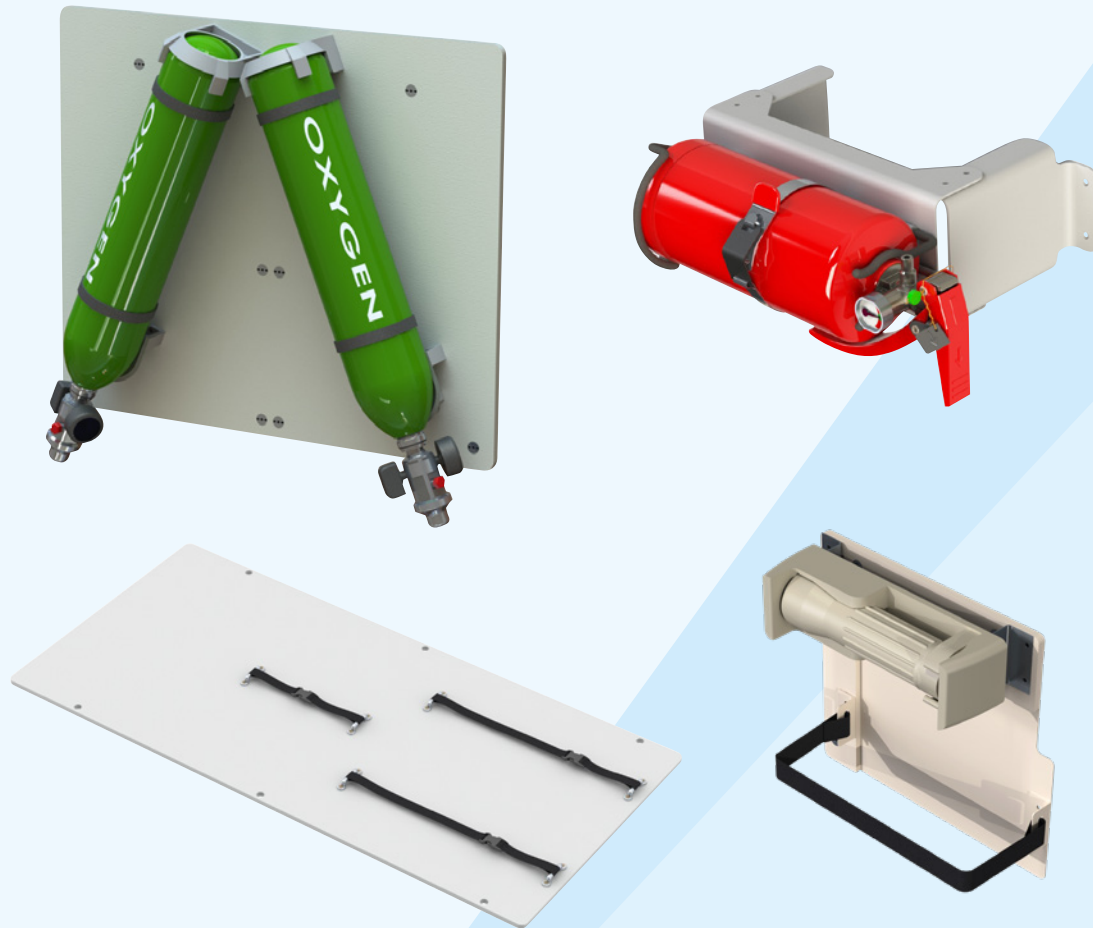


OVERHEAD STOWAGE BIN PARTITIONS

**B737, B757, B767,
B787, A320, A330**

**Various aircraft options,
used to provide separation
with overhead luggage
compartments for crew
or safety equipment**

- ▶ Supplied with installation kits and EASA approved engineering
- ▶ Painted to match your interior
- ▶ Optional placards



EMERGENCY EQUIPMENT MOUNTING SYSTEMS

**B737, B757, B767,
B787, A320, A330**

Various aircraft options

- ▶ Supplied with installation kits and EASA approved engineering
- ▶ Painted to match your interior
- ▶ Bespoke designs to suit your requirement

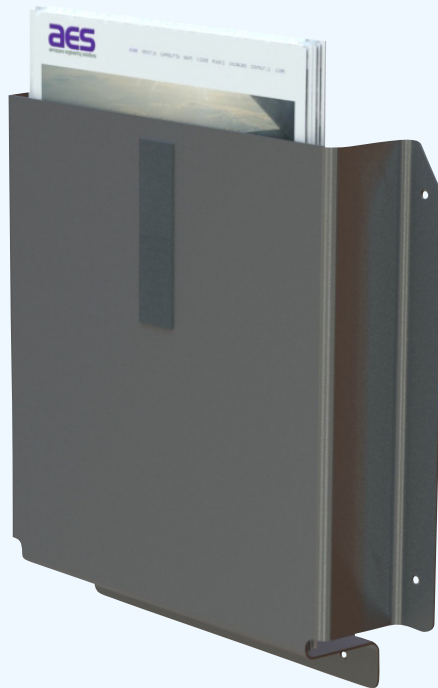


FLIGHT DECK STOWAGE POUCH

**B737, B757, B767,
B787, A320, A330**

Available for various aircraft

- ▶ Supplied with installation kits and EASA approved engineering
- ▶ Customised wording to suit your requirement
- ▶ Approx. size 8.65" x 5.5" x 7.5"

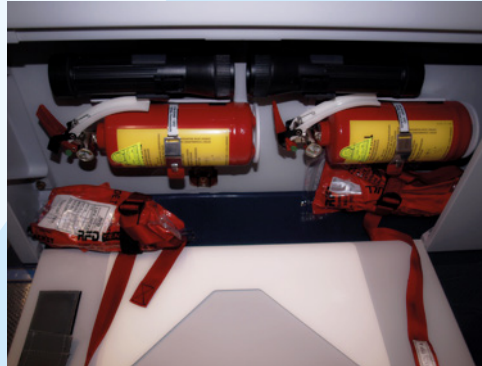


DOCUMENT STOWAGE

**B737, B757, B767,
B787, A320, A330**

Available for various aircraft

- ▶ Supplied with installation kits and EASA approved engineering
- ▶ Installed below Cabin Attendant Seats/Flight Deck Wardrobe/Flight Deck Console/Overhead Lockers



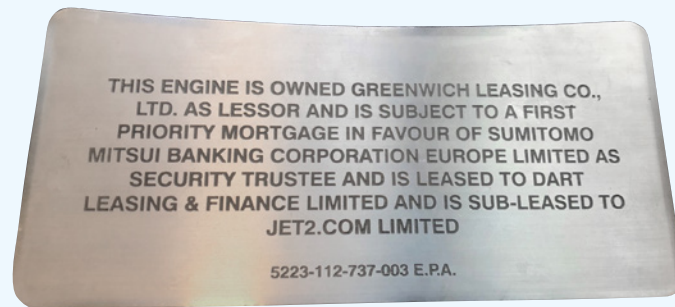


LITERATURE POCKETS

Various Aircraft

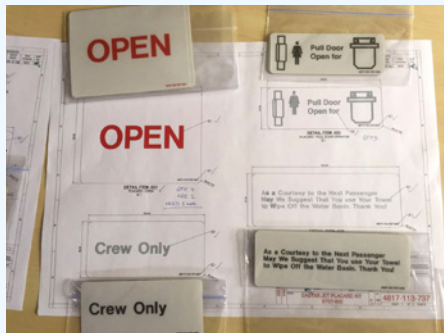
Economic Solution

- ▶ Supplied with installation kits and EASA approved engineering
- ▶ Optional leather or assembled with your branded leather material



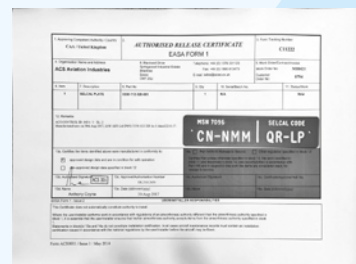
PLACARDS AND AIRCRAFT PLATES

**B737, B757, B767,
B787, A320, A330**



Placards, Lease Plates, Selcal Plates

- ▶ Supplied with installation kits and EASA approved engineering
- ▶ Single or Dual Language options
- ▶ Quick turnaround
- ▶ EASA Form 1 options for all parts





EMERGENCY EQUIPMENT DEMO KITS AND POUCHES

Various Aircraft

Safety First

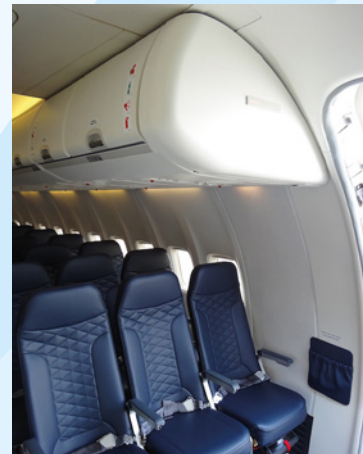
- ▶ Supplied with installation kits and EASA approved engineering
- ▶ Customised to suit your airline
- ▶ Optional branding available



END CAP REWORK **B737NG**

Cost effective solution

- ▶ Supplied with installation kits and EASA approved engineering
- ▶ You provide existing endcap for rework or AES can provide a reworked endcap to suit your 189Y configuration





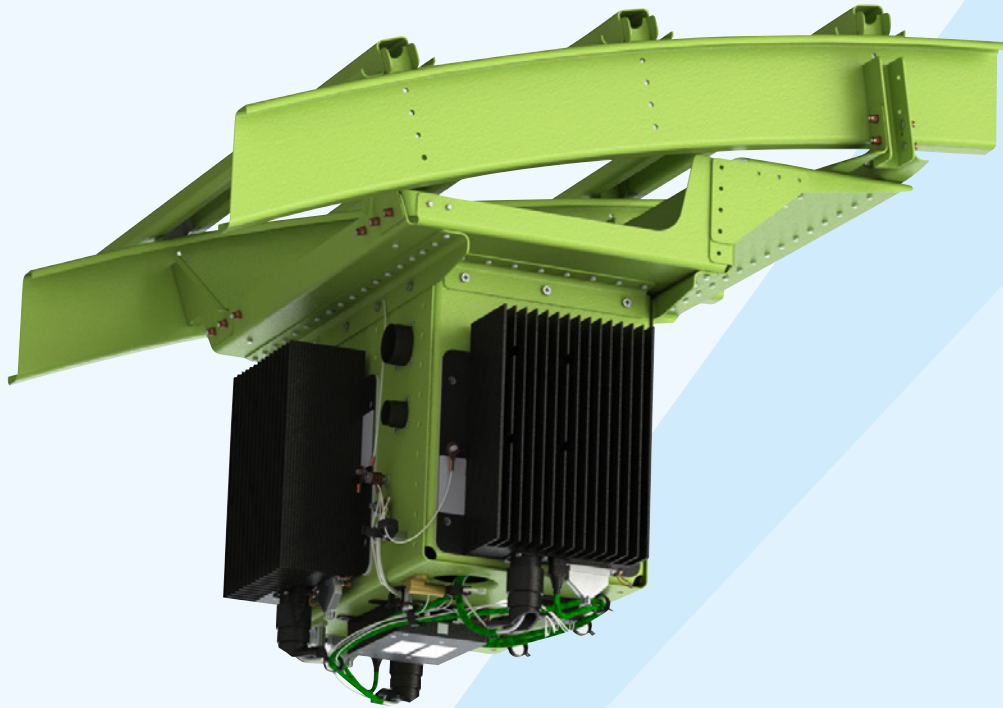
LF-ULD SOLUTION

**B737, B747, B757, B767,
B777, A320, A330
Families, Avro RJ**

Low Frequency Underwater Locator Device

CAT.IDE.A.285(f) states that all aircraft with a maximum take-off mass of over 45,000 kg operating over oceanic areas are to be fixed with the Low Frequency Underwater Locator Device

- ▶ Supplied with EASA Approved engineering and ICA
- ▶ LRU and installation kits provided
- ▶ Complete with Novega SID88 Beacon
- ▶ Optional FAA Approval available

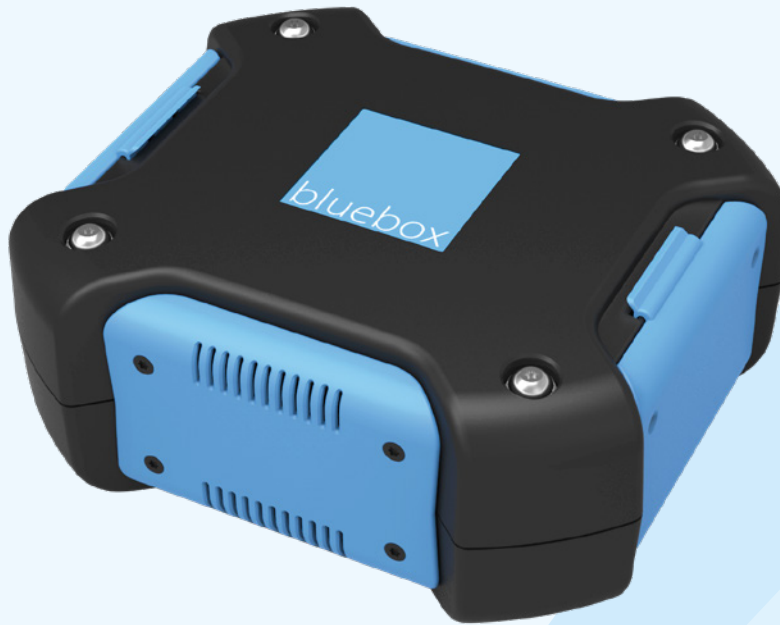


STRUCTURAL SUPPORTS FOR EQUIPMENT

**B737, B757, B767,
B787, A320, A330**

Available for various aircraft

- ▶ Supplied with installation kits and EASA approved engineering
- ▶ Painted to match your interior
- ▶ Bespoke or off the shelf parts provided



AIRCRAFT
POWERED W-IFE
INSTALLATION
BLUEBOX WOW
EASA STC 10076801

Applicable to A320 Family

- ▶ Additional aircraft types in progress
- ▶ Supplied with EASA Form 1 approval
- ▶ Installation kits provided
- ▶ Cost-effective solution for on board W-IFE solution
- ▶ Lunchbox-sized unit stowed securely in overhead bins.

This STC is for the installation of the aircraft powered version of Bluebox Aviation Systems' wireless streaming hardware platform, Bluebox Wow, which can be deployed to deliver in-flight entertainment, onboard retail, and other digital services.

Utilising aircraft power eliminates the need for the logistical management of batteries whilst still offering a considerably lighter and lower-cost system than fully fitted W-IFE.

KITTING & PARTS MANAGEMENT

With an excellent supporting team of partner companies, Aerospace Engineering Solutions can prepare and arrange kits and parts for a wide range of aircraft. We will co-ordinate the purchase of OEM, standard parts, or bespoke parts to satisfy your requirements.

From a small single part supply (a decal for example) to the management of a cabin reconfiguration or In-Flight Entertainment Systems (IFE) retrofit programme, AES has extensive experience in providing this service.

We can arrange manufacture and supply for all our own designed parts. We offer this service for our own engineering packages or 3rd party packages.

ENGINEERING SERVICES **VARIOUS AIRCRAFT**

Services Aerospace Engineering Solutions can offer

Cabin LOPA

PSU Layout & Hook Up

Carpet Layout

Curtain Layout

EPL Layout

**Safety Equipment Layouts
& Installations**

Placard Installations

**Liveries (Airline &
Promotional)**

Mode S Change

Selcal Code Change

EGPWS Callout Change

Galley Insert Installations

Crew Rest Installations

ADS-B Out (Various)

Zero Pax LOPA

LF-ULD Installations

**Wi-Fi Installations (fixed
and portable)**

Wi-Fi Upgrades

IFE Installations

HF2 Install / Activation

Airline Rebrand

Dress Cover Changes

Seat Modifications

Class Divider Installations

**Literature Pocket
Installations**

TCAS 7.1 Upgrade

**Monument Installations and
Removals (Galley / Closet /
Stowage / Lavatory)**

Cabin Surveys

**Parts Procurement &
Kitting**

Stress Reports

ILR Reports

ELA Reports

EMI Reports

DO160 Reports

Flammability Testing (all)

Structural Testing



For a competitive quote please contact:

Email: **info@aesglobal.co.uk**

Tel : **+44 (0) 1376 344960**

Aerospace Engineering Solutions

EASA.21J.722, UAE DOA/181, ECAA/AW/AE/I0151/R1

6 Freeport Office, Century Drive, Braintree, Essex, CM77 8YG

Ireland Office

Building 4000 Suites, 4239/4240 Atlantic Avenue,

Westpark Business Campus, Shannon, Ireland

Tel : **+353 (0) 61 518342**

